

**Product: RBD-6xHis purified recombinant protein**  
**Catalog N.: PR0012**

## 1. Application

Application

-ELISA and Western Blot

For laboratory use only. Not for any clinical, therapeutic, or diagnostic use in human or animals.

## 2. Product description

<b>Region/sequence:</b>	SARS-CoV-2, RBD region, aa 351-541 and His tag at C-terminus
<b>Calculated MW:</b>	26.0 KDa
<b>Expression Host:</b>	HEK293 cells
<b>Form:</b>	Liquid
<b>Concentration:</b>	1,6 mg/ml (UV abs)
<b>Purity</b>	>95%
<b>Conjugation:</b>	Unconjugated
<b>Endotoxin:</b>	<0,01EU/mg
<b>Quantity:</b>	100 ug
<b>Buffer:</b>	Phosphate Buffered Saline (pH 7,4)
<b>Storage:</b>	Store as concentrated solution. Centrifuge briefly before opening vial. Aliquot and store at -20°C or below. Avoid multiple freeze-thaw cycles.

SISTEMA DI GESTIONE  
 QUALITÀ CERTIFICATO

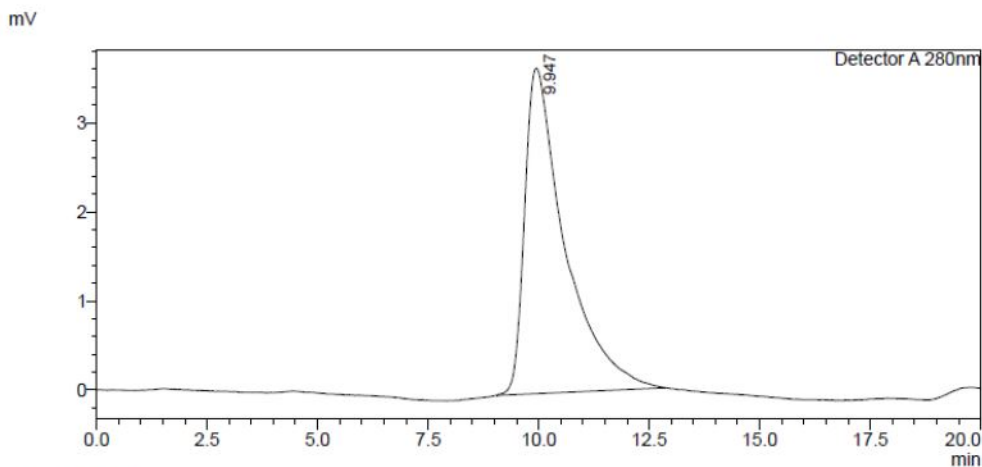


UNI EN ISO 9001:2015

FOR RESEARCH USE ONLY

Page 1/3

### 3. SEC-HPLC



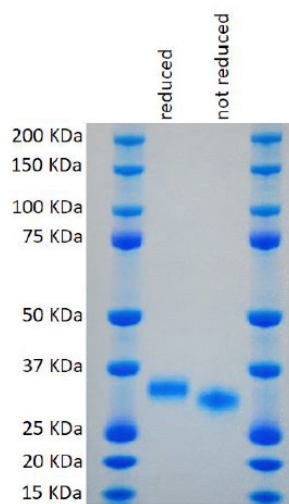
**<Peak Table>**

Detector A 280nm			
Peak#	Ret. Time	Area	Area%
1	9.947	231222	100.000
Total		231222	100.000

Result: aggregates <10%

### 4. SDS-PAGE

Non-reducing / Reducing SDS-PAGE Loading :



**RBD-6xHis**

## 5. ACE2-hFc binding

**COATING:** RBD-6His 1ug/ml in PBS 1x, 50 ul/well, ON 4°C

**PROTEIN BINDING:** ACE2-hFc in scalar dilutions, in 1% BSA, ON 4°C

**DETECTION:** anti-Human, AP conjugated

**DEVELOPMENT:** AP substrate, 1h RT, abs at 405 nm

